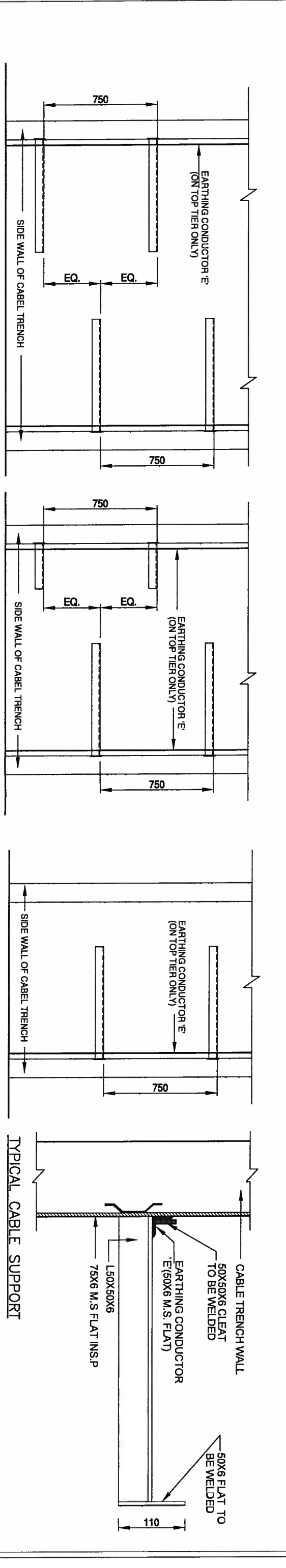
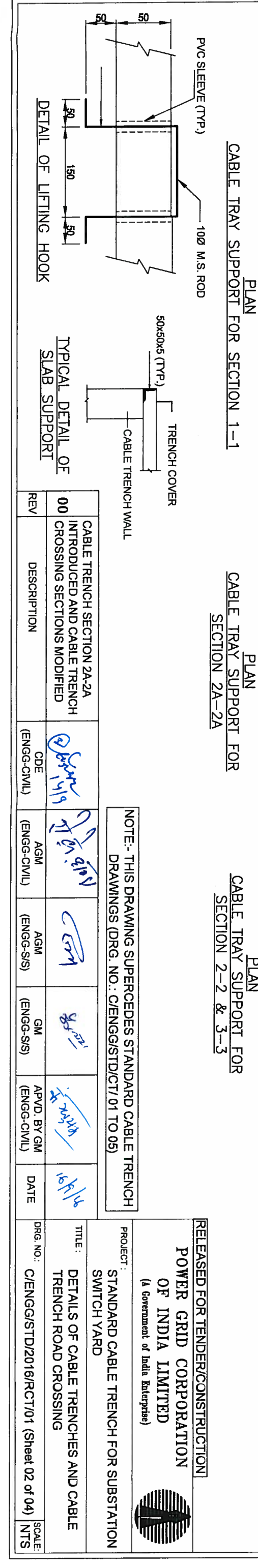


RCC COVER PLAN FOR SECTION (1-1), (2-2) & (2A-2A)



DETAIL OF TRENCH COVER SLAB FOR SECTION (3-3) & (4-4)



CABLE TRAY SUPPORT FOR SECTION 1-1

CABLE TRAY SUPPORT FOR SECTION 2A-2A

CABLE TRAY SUPPORT FOR SECTION 2-2 & 3-3

TYPICAL CABLE SUPPORT

NOTE:- THIS DRAWING SUPERCEDES STANDARD CABLE TRENCH DRAWINGS (DRG. NO.: C/ENG/STD/CT/01 TO 05)

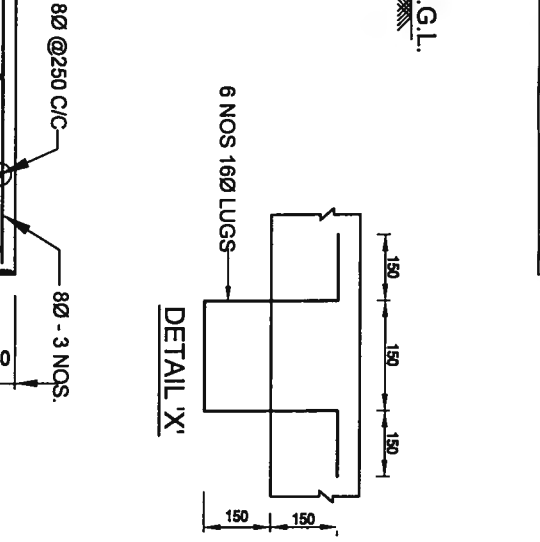
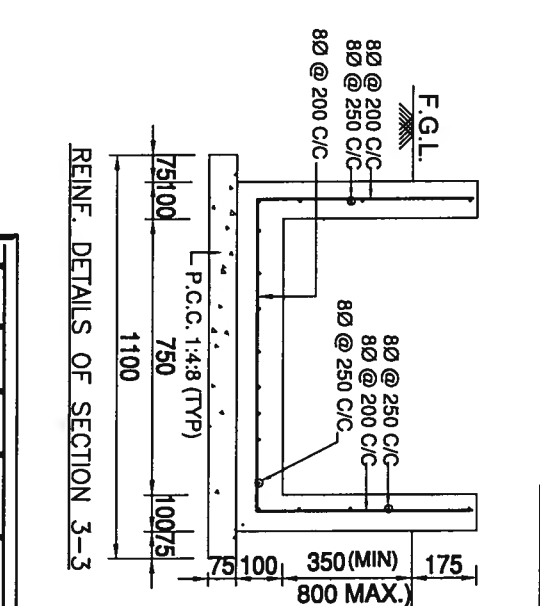
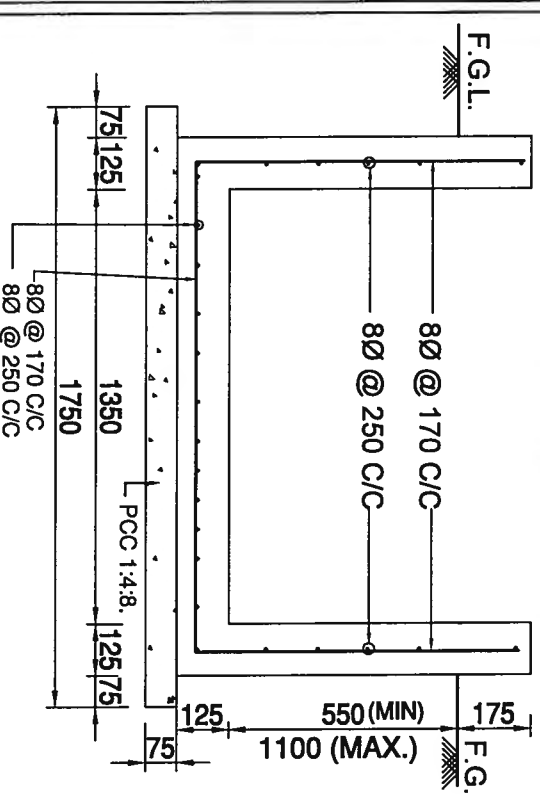
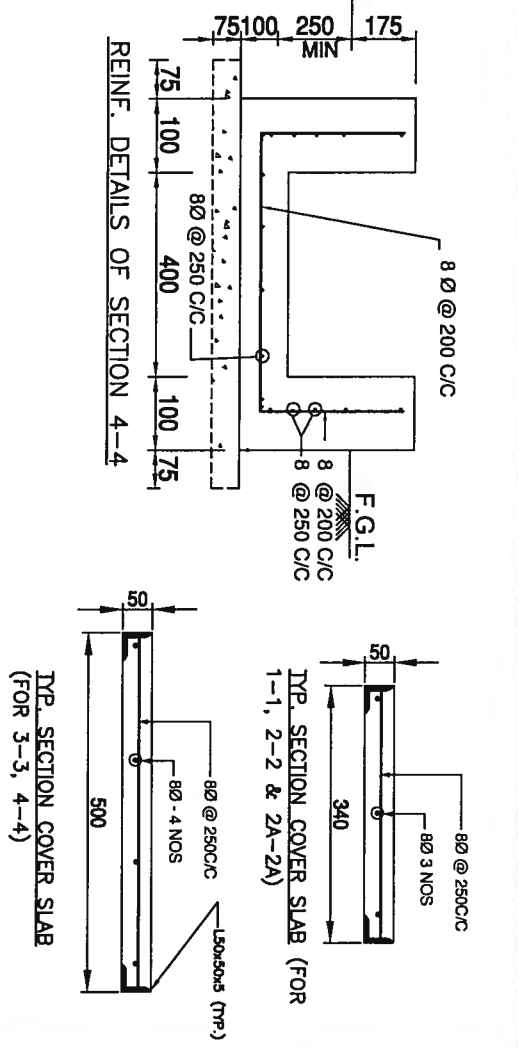
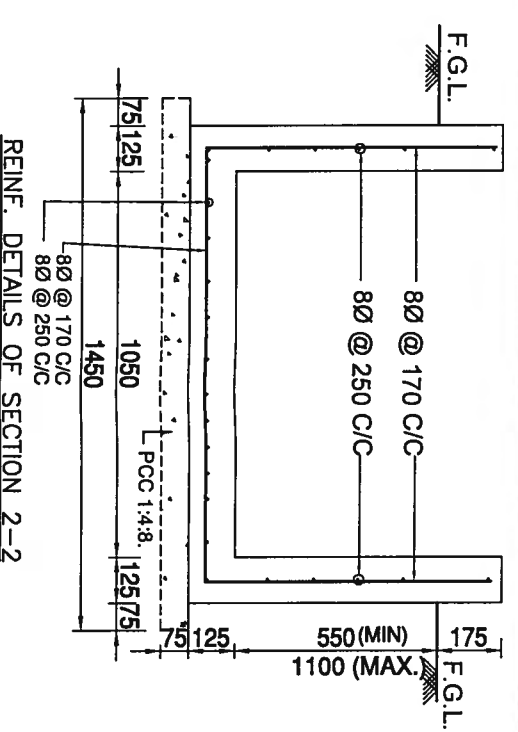
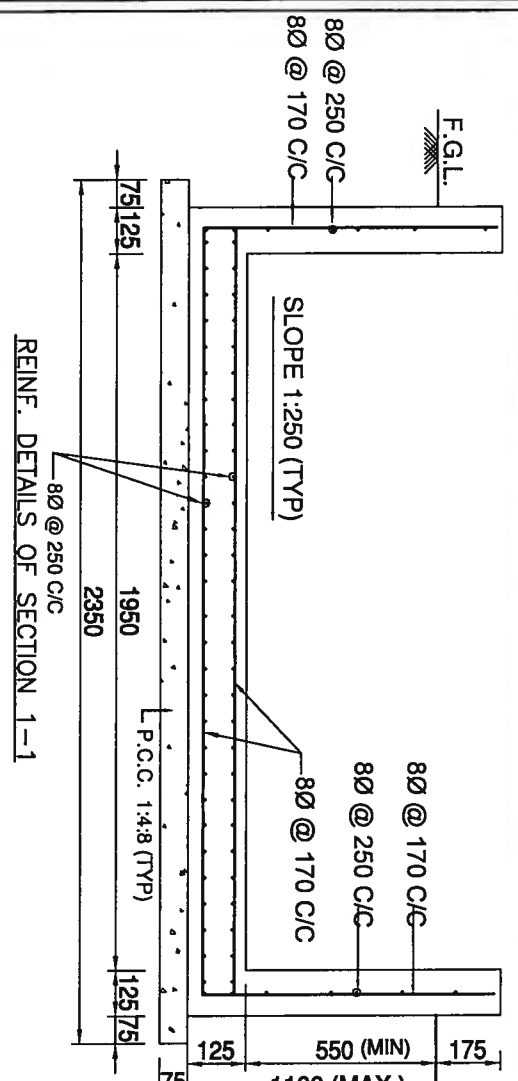


REV	DESCRIPTION	CDE (ENGG-CIVIL)	AGM (ENGG-CIVIL)	AGM (ENGG-S/S)	GM (ENGG-S/S)	APVD. BY GM (ENGG-CIVIL)	DATE	DRG. NO.	SCALE
00	CABLE TRENCH SECTION 2A-2A INTRODUCED AND CABLE TRENCH CROSSING SECTIONS MODIFIED						16/11/16	C/ENG/STD/2016/RCT/01 (Sheet 02 of 04)	NTS

RELEASED FOR TENDER/CONSTRUCTION
POWER GRID CORPORATION
OF INDIA LIMITED
(A Government of India Enterprise)



PROJECT: STANDARD CABLE TRENCH FOR SUBSTATION SWITCH YARD
TITLE: DETAILS OF CABLE TRENCHES AND CABLE TRENCH ROAD CROSSING



REIN. DETAILS OF SECTION 2A-2A

REIN. DETAILS OF SECTION 3-3

FORMATION LEVEL

8Ø @ 250 C/C

8Ø - 3 NOS.

250Ø HUME PIPE AND SUMP PIT

OF

250Ø HUME PIPE AND SUMP PIT

OF

250Ø HUME PIPE AND SUMP PIT

OF

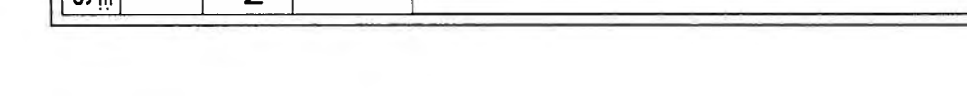
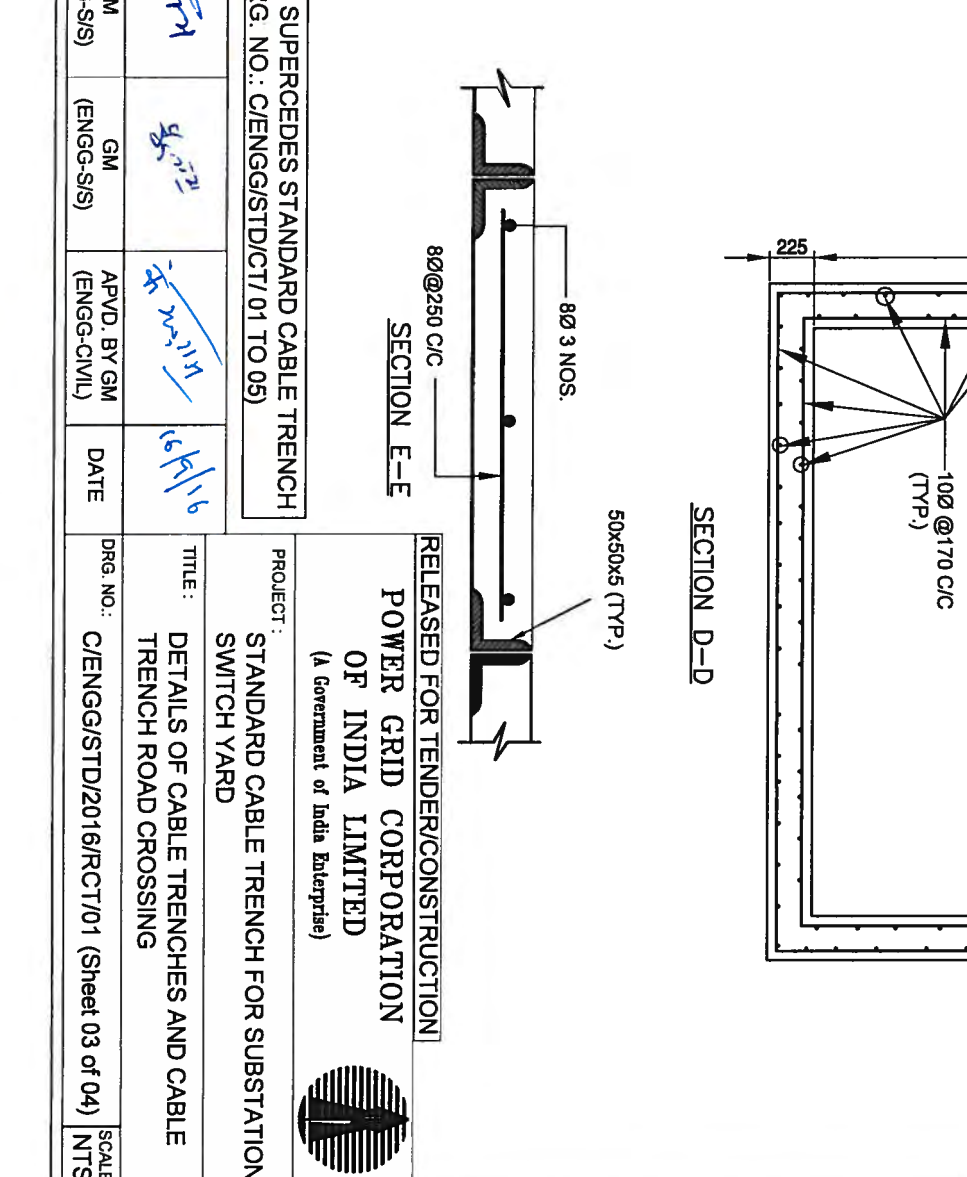
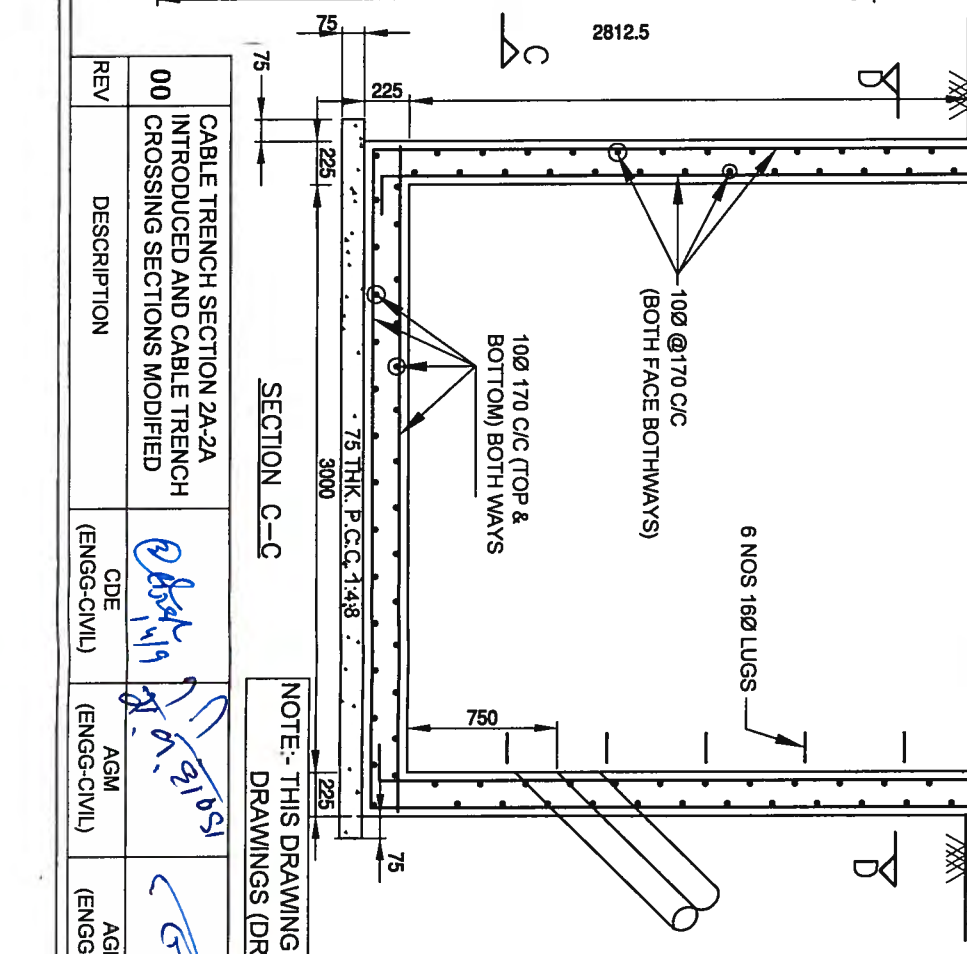
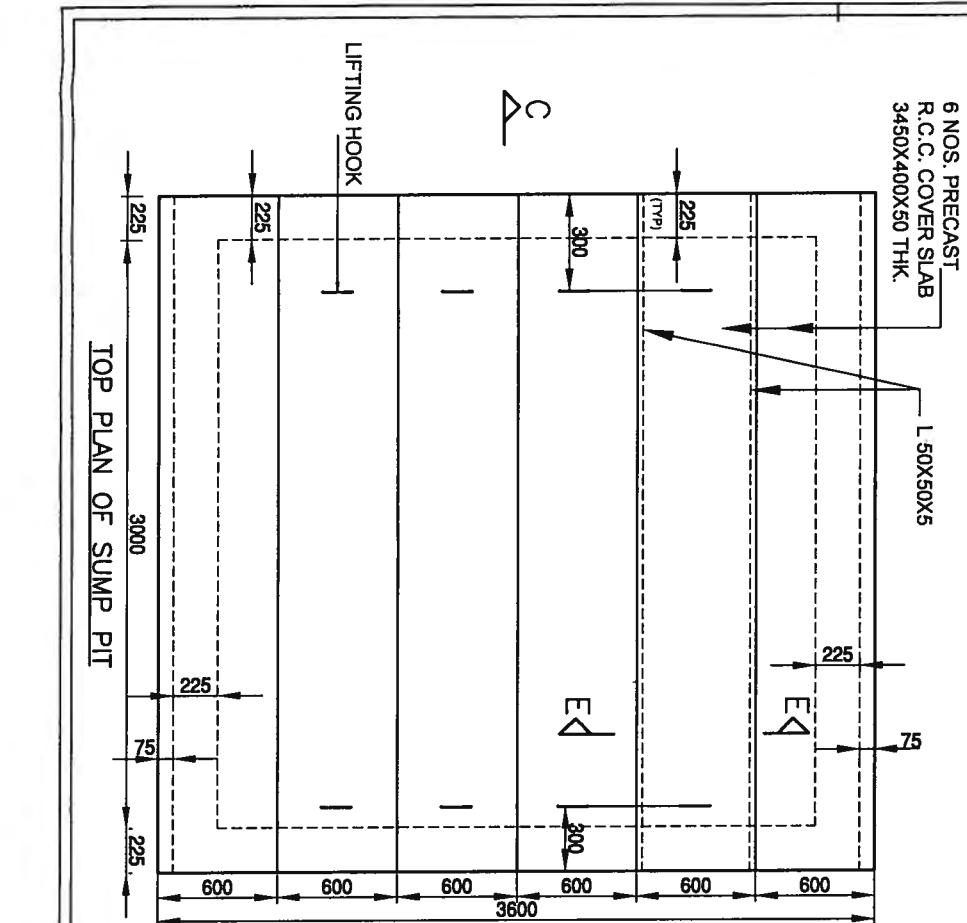
250Ø HUME PIPE AND SUMP PIT

OF

250Ø HUME PIPE AND SUMP PIT

OF

250Ø HUME PIPE AND SUMP PIT



REV	DESCRIPTION	CDE (ENGG-CIVIL)	AGM (ENGG-CIVIL)	AGM (ENGG-S/S)	GM (ENGG-S/S)	APVD. BY GM (ENGG-CIVIL)	DATE	DRG. NO.	SCALE
00	CABLE TRENCH SECTION 2A-2A INTRODUCED AND CABLE TRENCH CROSSING SECTIONS MODIFIED							C/ENGG/STD/2016/RCT/01 (Sheet 03 of 04)	NTS

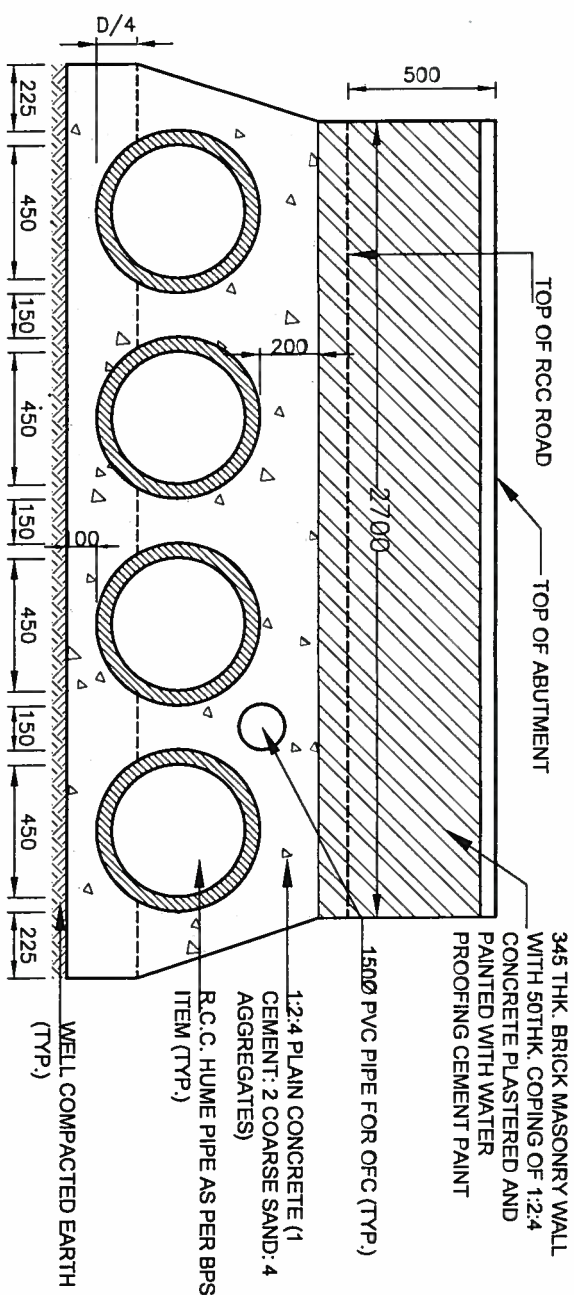
NOTE: THIS DRAWING SUPERCEDES STANDARD CABLE TRENCH DRAWINGS (DRG. NO.: C/ENGG/STD/CT/01 TO 05)

PROJECT: STANDARD CABLE TRENCH FOR SUBSTATION SWITCH YARD

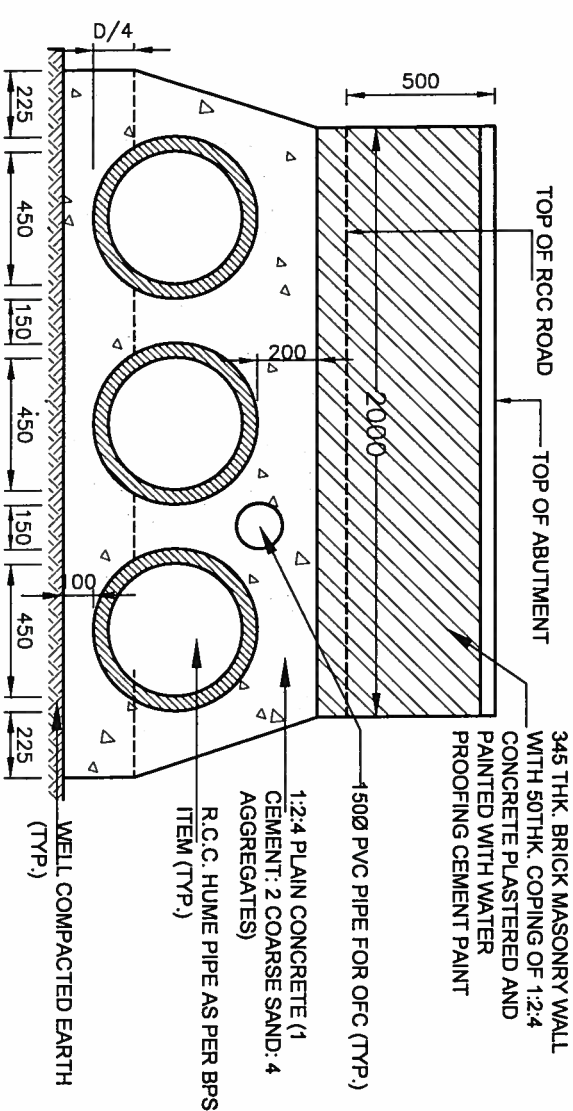
POWER GRID CORPORATION OF INDIA LIMITED (A Government of India Enterprise)

RELEASED FOR TENDER/CONSTRUCTION

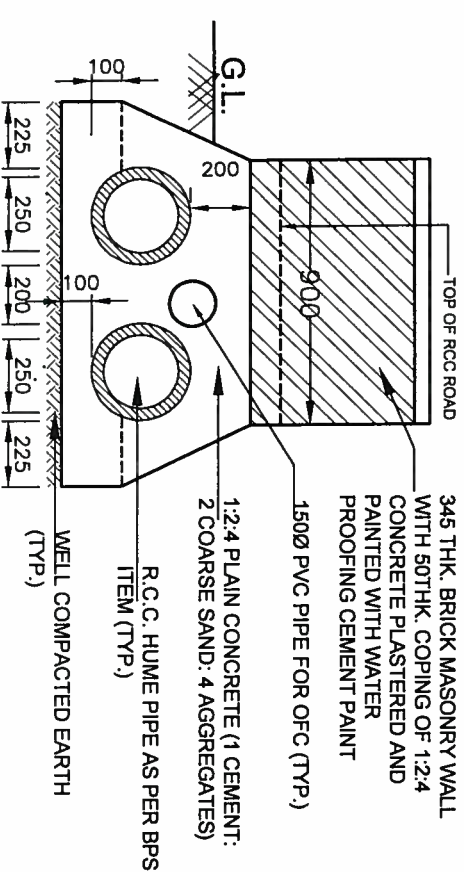
TITLE: DETAILS OF CABLE TRENCHES AND CABLE TRENCH ROAD CROSSING



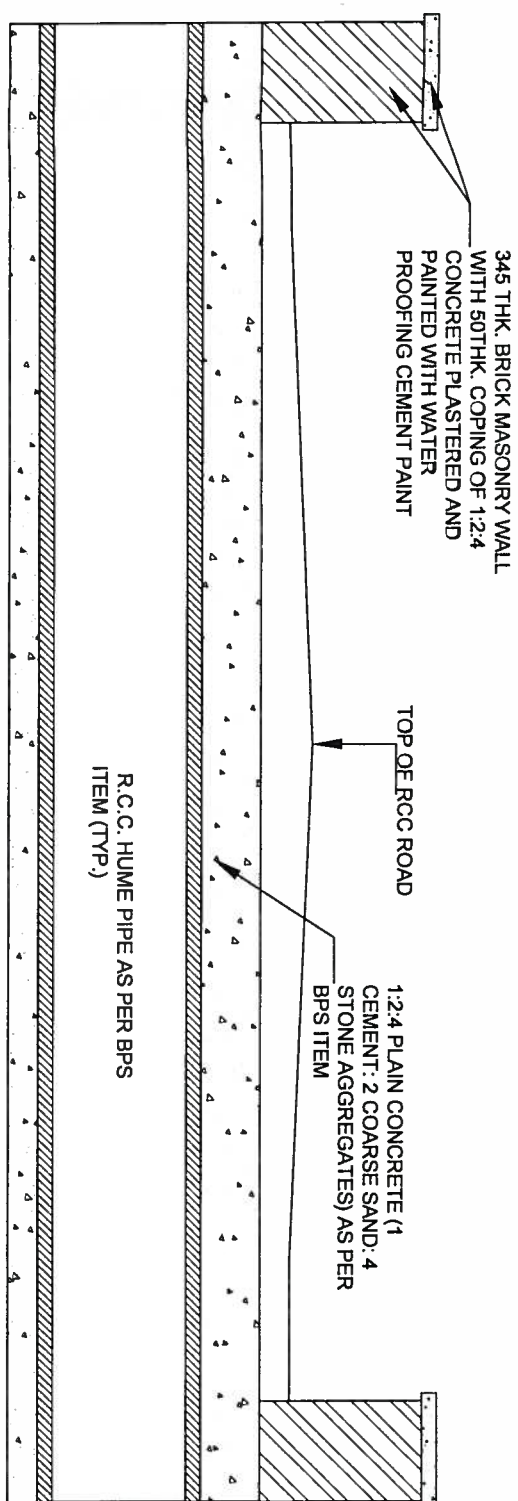
ROAD CROSSING SECTION FOR CABLE TRENCH FOR "SEC-1-1 & 2A-2A"



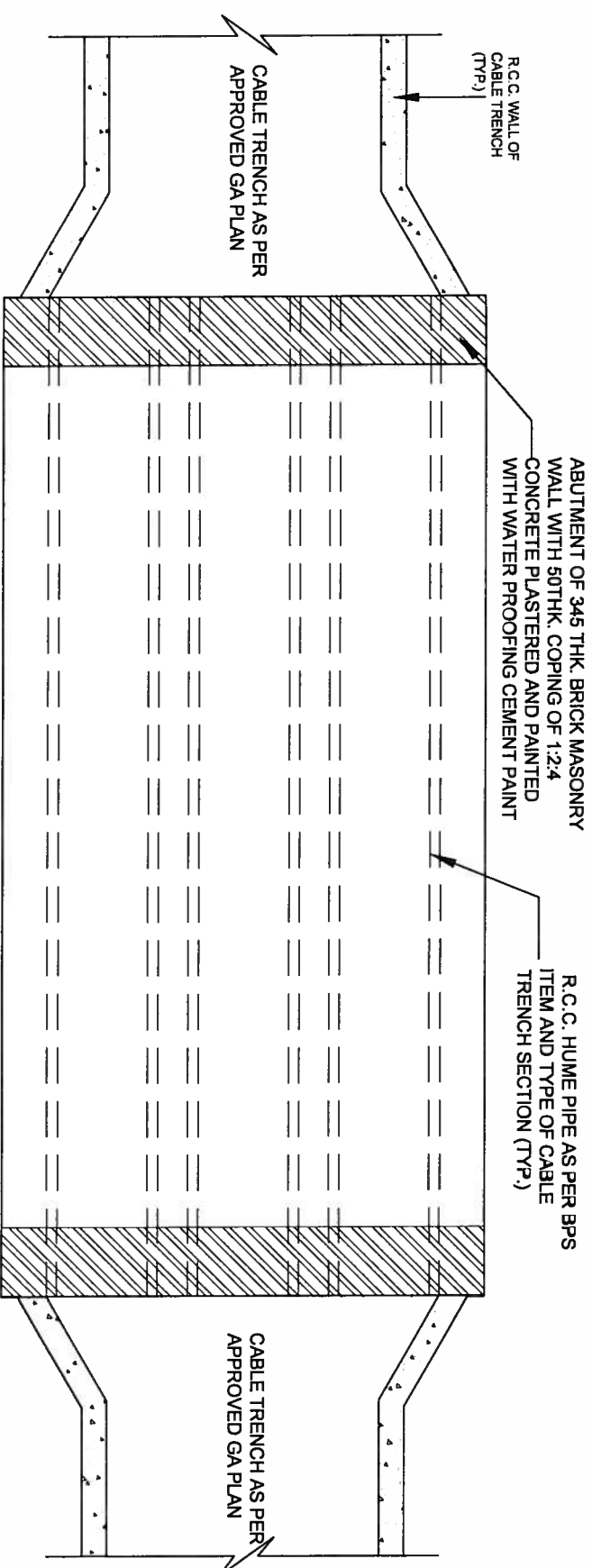
ROAD CROSSING SECTION FOR CABLE TRENCH "SEC-2-2"



ROAD CROSSING SECTION FOR CABLE TRENCH "SEC-3-3"



TYPICAL LONGITUDINAL ROAD CROSSING SECTION OF CABLE TRENCH THROUGH RCC PIPE



TYPICAL PLAN OF CABLE TRENCH WITH ROAD CROSSING

NOTE:- THIS DRAWING SUPERCEDES STANDARD CABLE TRENCH DRAWINGS (DRG. NO.: C/ENGG/STD/CT/01 TO 05)

REV	DESCRIPTION	CDE (ENGG-CIVIL)	AGM (ENGG-CIVIL)	AGM (ENGG-S/S)	GM (ENGG-S/S)	APVD. BY GM (ENGG-CIVIL)	DATE
00	CABLE TRENCH SECTION 2A-2A INTRODUCED AND CABLE TRENCH CROSSING SECTIONS MODIFIED						

RELEASED FOR TENDER/CONSTRUCTION
POWER GRID CORPORATION
OF INDIA LIMITED
(A Government of India Enterprise)



PROJECT: STANDARD CABLE TRENCH FOR SUBSTATION SWITCH YARD
TITLE: DETAILS OF CABLE TRENCHES AND CABLE TRENCH ROAD CROSSING
DRG. NO.: C/ENGG/STD/2016/RCT/01 (Sheet 04 of 04)
SCALE: NTS